

super mini-house :

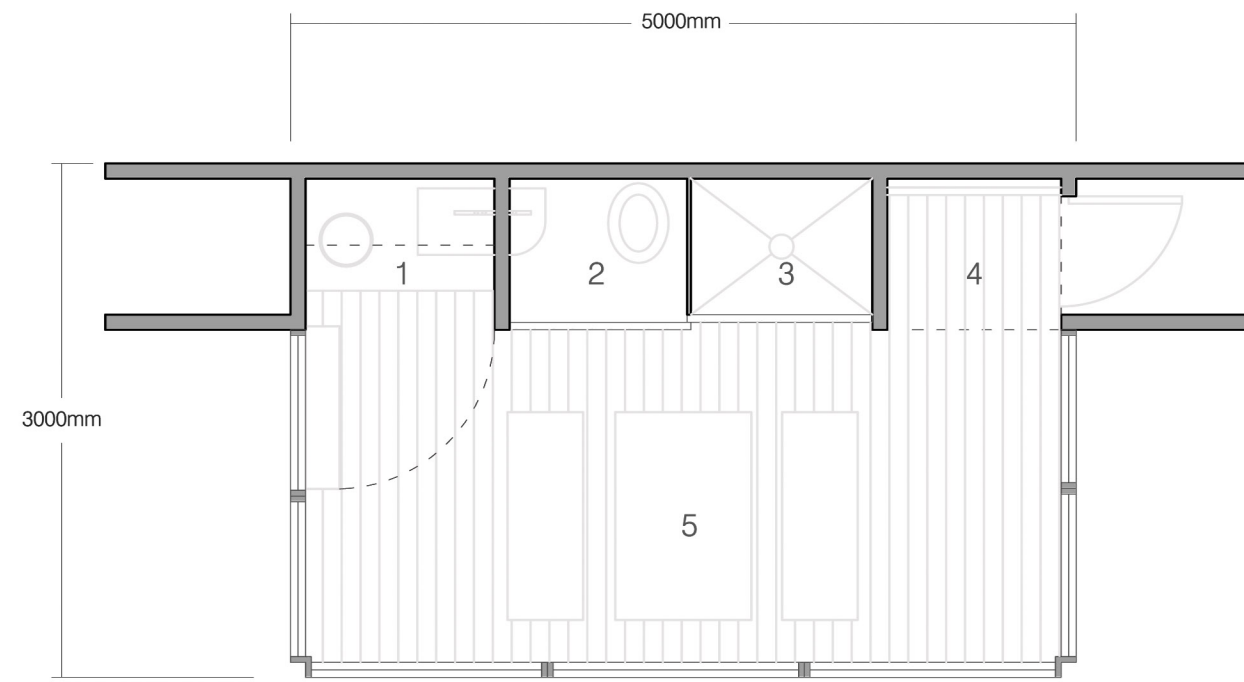
ESSENTIAL DWELLING



the essential dwelling facilitates basic modes of living within a minimal amount of space. the dwelling attempts to intensify the poetics of dwelling by enlarging the perception of available space. flexible programmatic strategies are supported by an expressive tectonic structural system.

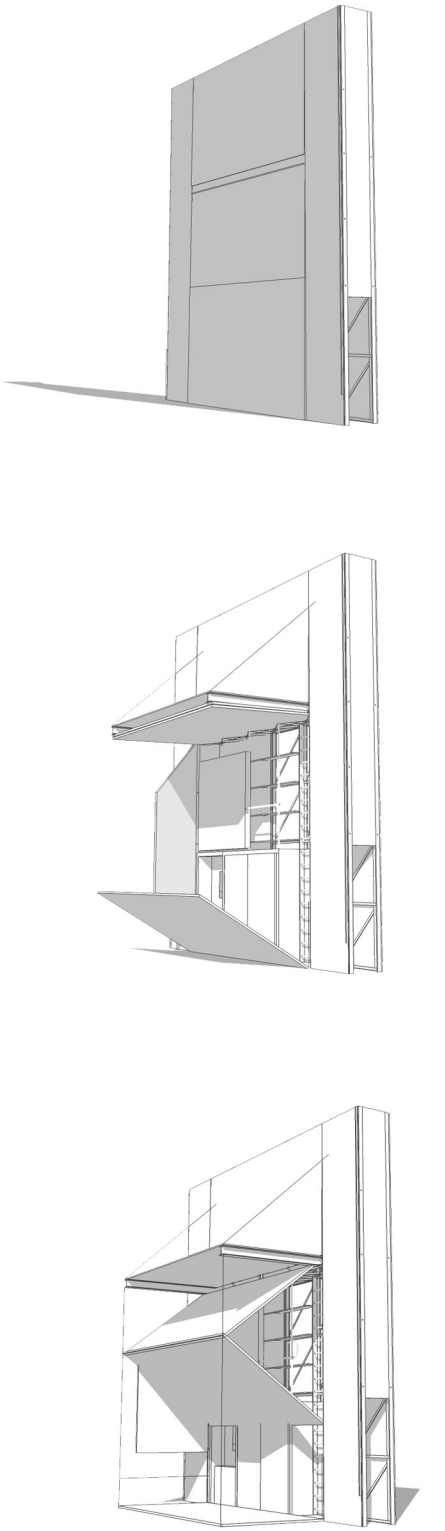
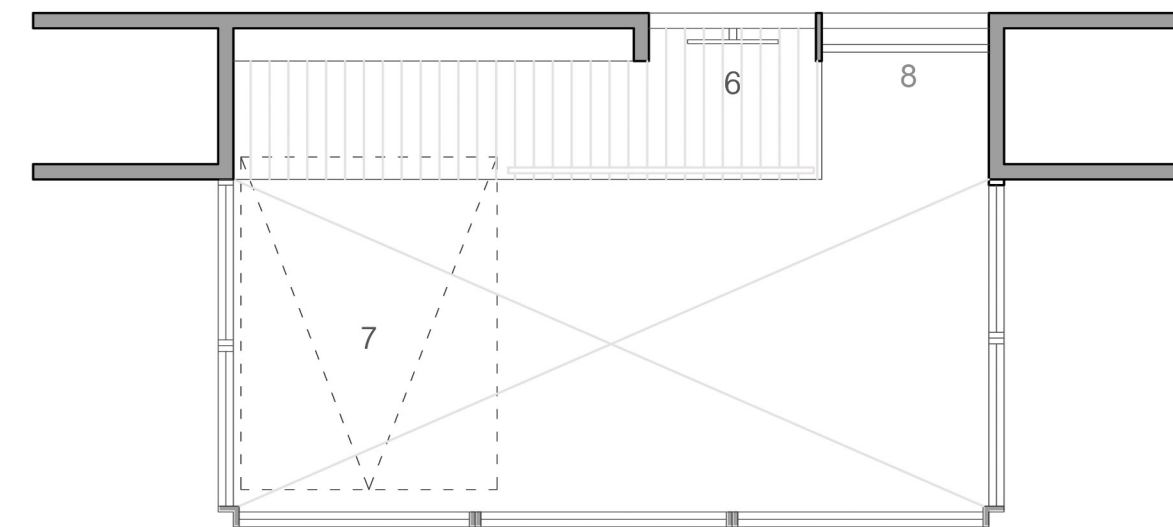
assembly sequence

- 1 kitchen:
sink
hot plate
fold out cupboard
- 2 sink and toilet
- 3 shower
- 4 entry
- 5 living & dining:
wooden furniture



scale 1:50

- 6 wheel for lowering
bed platform
- 7 bed platform
- 8 ladder



space frame steel structure



water collection



living/bathroom



eating/cooking



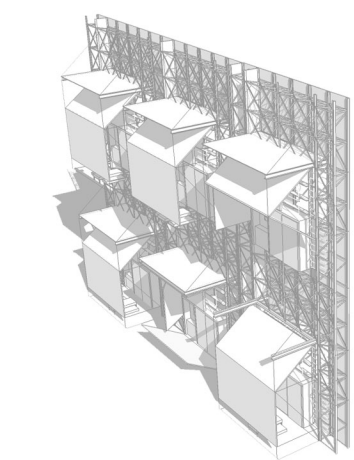
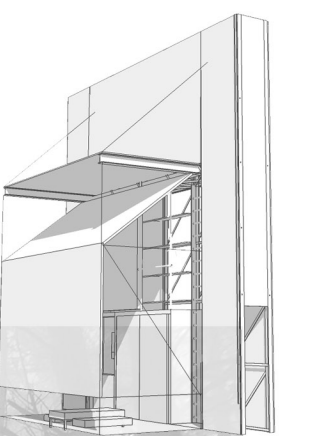
sleeping/lounging



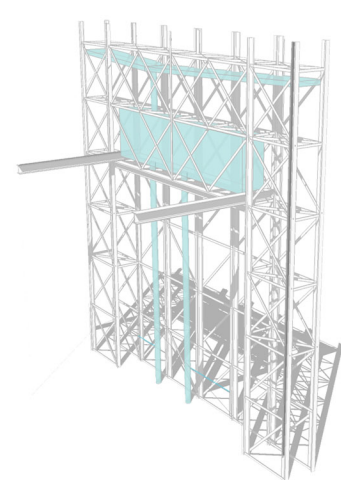
glazing at openings



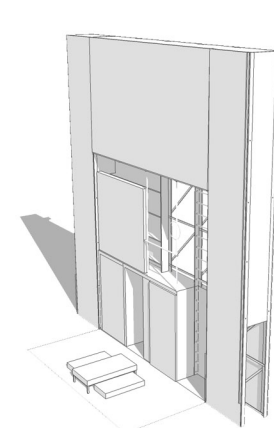
weathering steel envelope



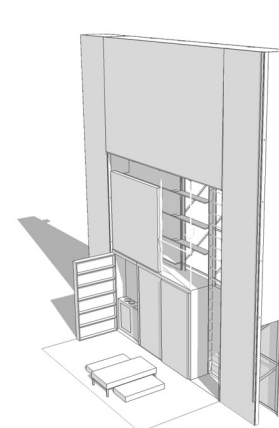
the expandable structural framework allows for additional housing units to be installed if house is desired within an urban context.



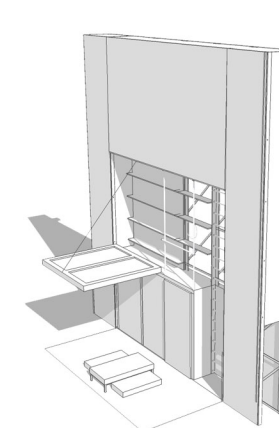
located within the structural framework, a water collection tank serves the kitchen and bathroom sinks, the toilet and the shower.



All services are located within the service wall in order to maximize the perception and livability of the main living space.



the kitchen folds out to serve the open living space. simple wooden furniture is used as both living and dining furniture.



the sleeping space unwinds out of the service wall with a simple pulley system. located behind the bed platform are book and storage shelves.

